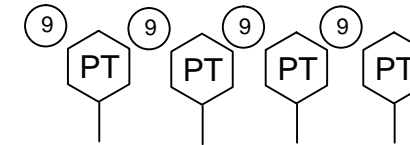
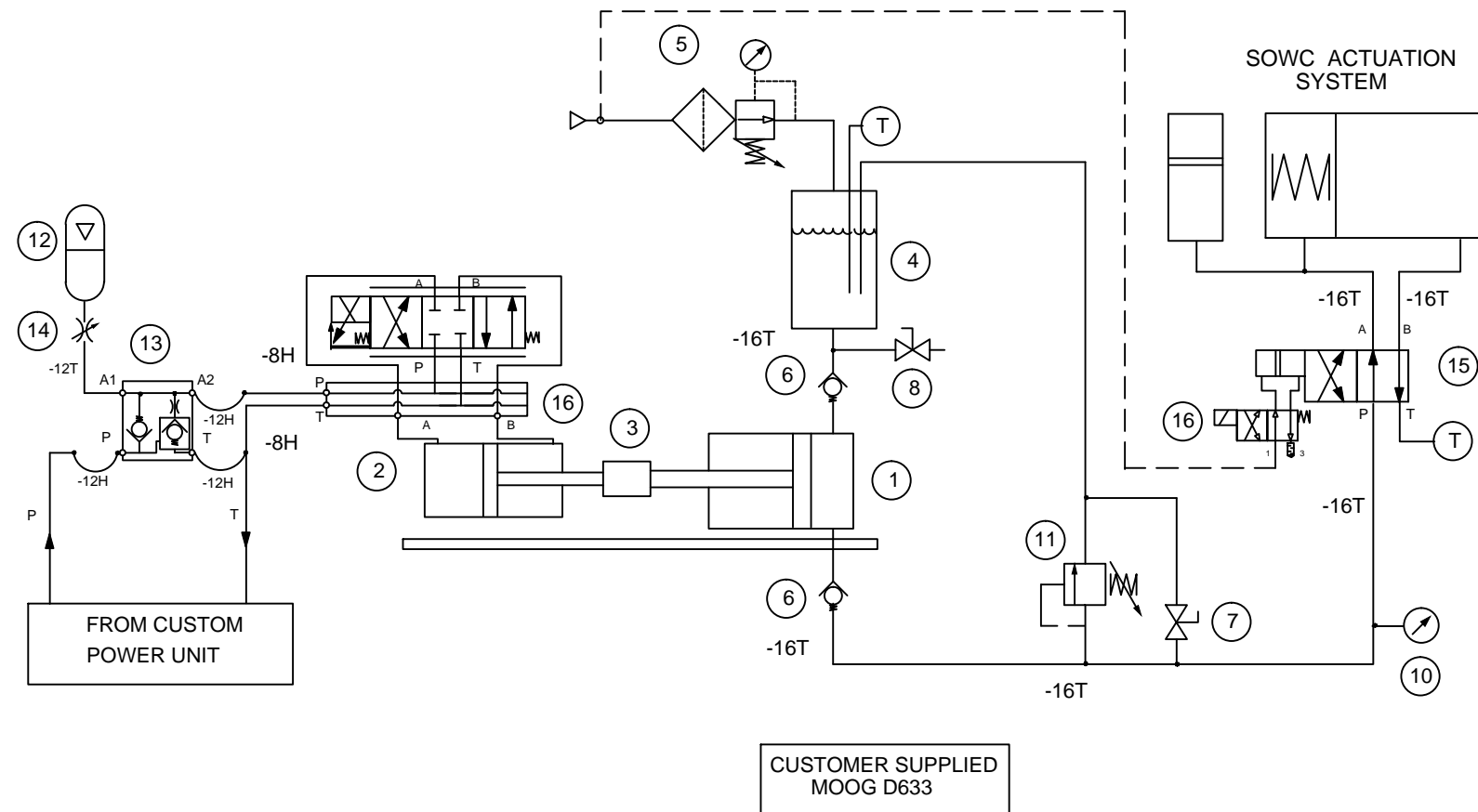


RECOMMENDED ACCUMULATOR MOUNTING HARDWARE  
 ACCUMULATORS INC. MTG. BASE AI-1-512  
 ACCUMULATORS INC. U-BOLT KIT AI-1-507



16	1	DAMAN D03 SUBPLATE DD03SPS8S
15E	1	ACTUATOR COUPLING SEV-075B
15D	1	ACTUATOR BRACKET FT-BK-1
15C	1	PAR-U341N05-NCIB NAMUR MTE. 3-WAY 24VDC SOLENOID VALVE
15B	1	MAXAIR PNEUMATIC ACTUATOR MAX-MT-26-DA
15A	1	FLO-TITE 4-WAY BALL VALVE MPT104M-LL1"
14	1	ALKON NEEDLE VALVE JN6N
13	1	SUN HYDRAULICS UNLOADING VALVE YCFE-XANA-L/S
12	1	PARKER / GREER 1 GALLON ACCUMULATOR BA01B3T01A1G
11	1	MCMASTER RELIEF VALVE 4703K55 (201-400PSI RANGE)
10	1	DYNAMIC PRESSURE GAUGE PDSS-1-P-20-A-001 (0-300PSI)
9	4	STS SENSORS PRESSURE TRANSDUCER ATM-1ST
8	1	MCMASTER 3/4" BALL VALVE 47865K24
7	1	GRAINGER 3/4" BALL VALVE 6GD39
6	2	SNAP-TITE CHECK VALVES CPIFF-16S-05
5	1	GRAINGER FILTER REGULATOR 4RA25
4	1	PENWAY 5 GAL. RESERVOIR A2100016320
3	1	CYLINDER ROD THREADED CONNECTER
2	1	HANNA 2"B X 3"S X 1"R LUG MOUNT CYLINDER
1	1	HANNA 4"B X 3"S X 2"R LUG MOUNT CYLINDER

**TOLERANCE**

FRACTION  $\pm 1/64$   
 .00  $\pm .010$   
 .000  $\pm .005$   
 ANGLES  $\pm 1^\circ$   
 UNLESS NOTED

**NOTES**

REMOVE ALL  
 BURRS & BREAK  
 SHARP CORNERS



PHONE:  
 (248)-583-1020  
 FAX:  
 (248)-583-9486

**CONTROL POWER CO.**  
 310 EXECUTIVE DRIVE TROY, MI 48083-4587

MEANS SOWC ACTUATOR  
 SYSTEM TEST CIRCUIT

DESIGN REFERENCE: SCALE: NONE RFQ NO.

DATE: 10.28.14 REV: SH: 1 JOB NO.

FILE NAME: OF: 1 DWG NO.

CHECKED BY:

DRAWN BY: P. HOZIAN

**NOTICE**

THIS DRAWING IS THE PROPERTY OF CONTROL POWER AND RETURNABLE UPON REQUEST. IT MUST NOT BE REPRODUCED OR INFORMATION HEREIN TRANSMITTED IN ANY WAY WITHOUT WRITTEN CONSENT FROM THE COMPANY. PATENTS HAVE BEEN GRANTED AND PATENT APPLICATIONS ARE PENDING OR IN PROCESS OF PREPARATION ON ALL OF OUR DEVELOPMENTS.