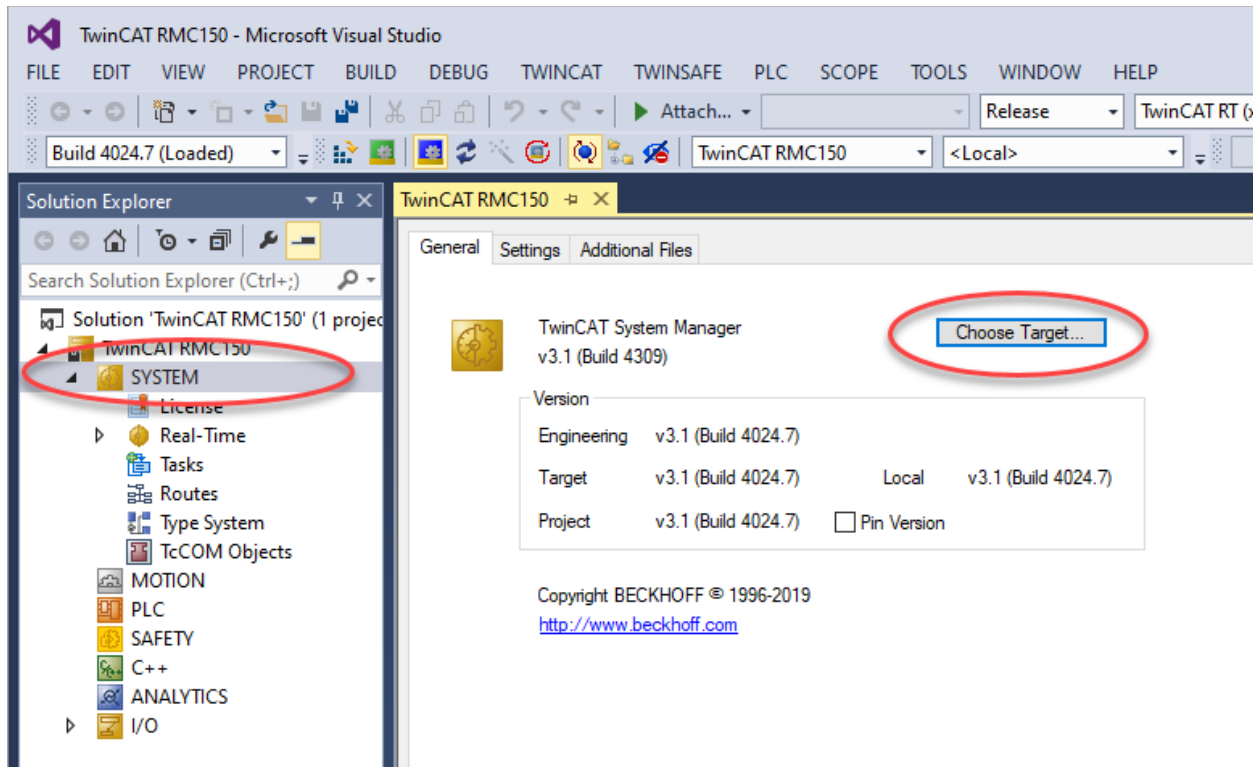
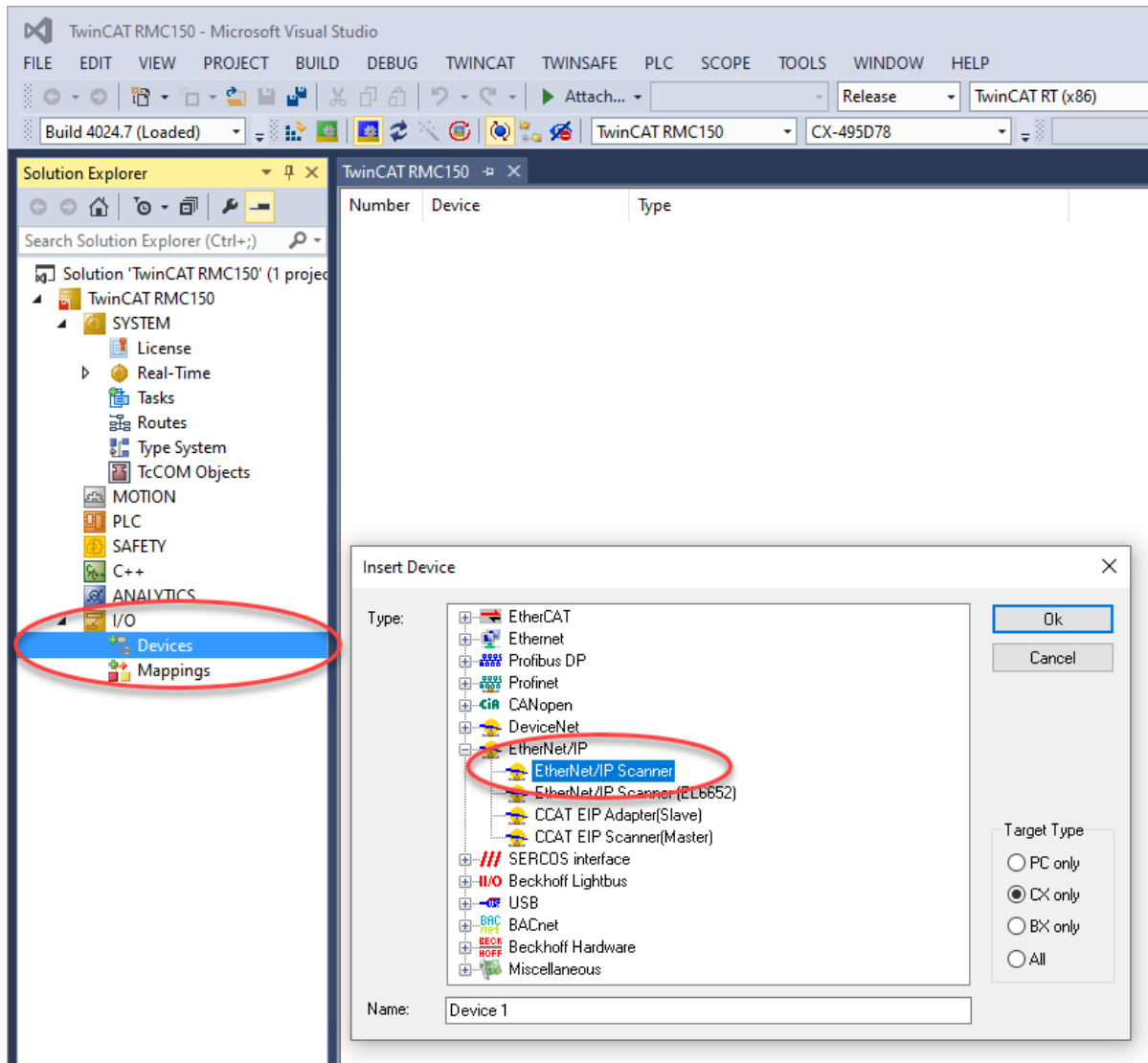


## Beckhoff Cyclic Ethernet/IP I/O RMC-150 Connection introduction

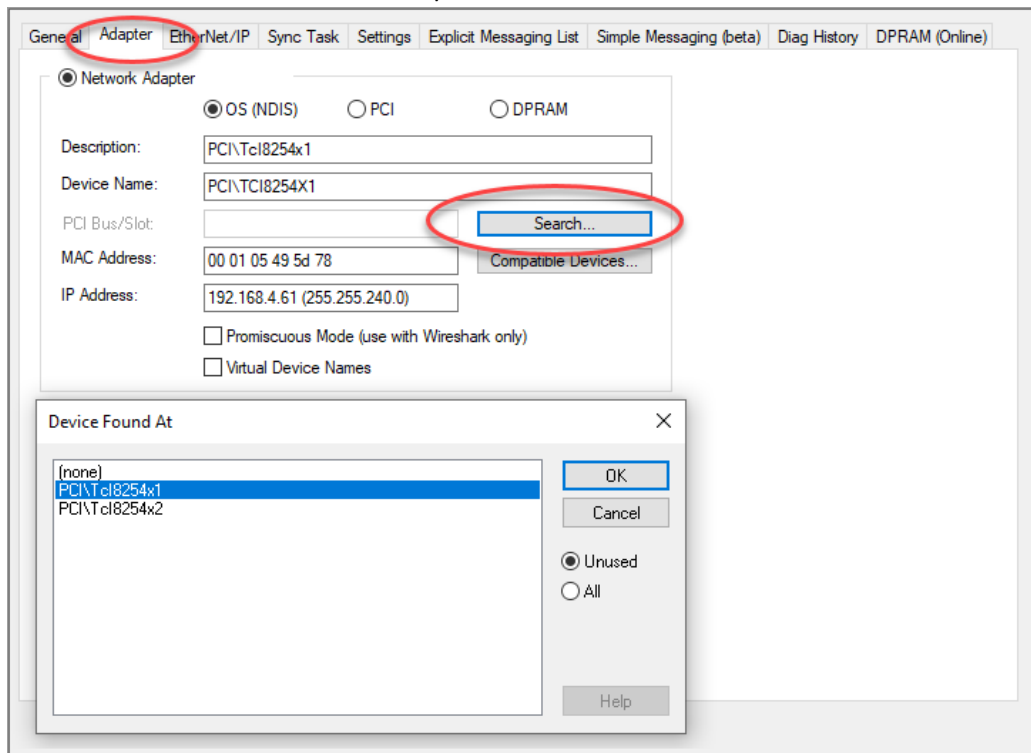
1. Create blank TwinCAT project
2. Connect to Beckhoff
  - a. Double-click "SYSTEM"
  - b. Select "Choose Target"



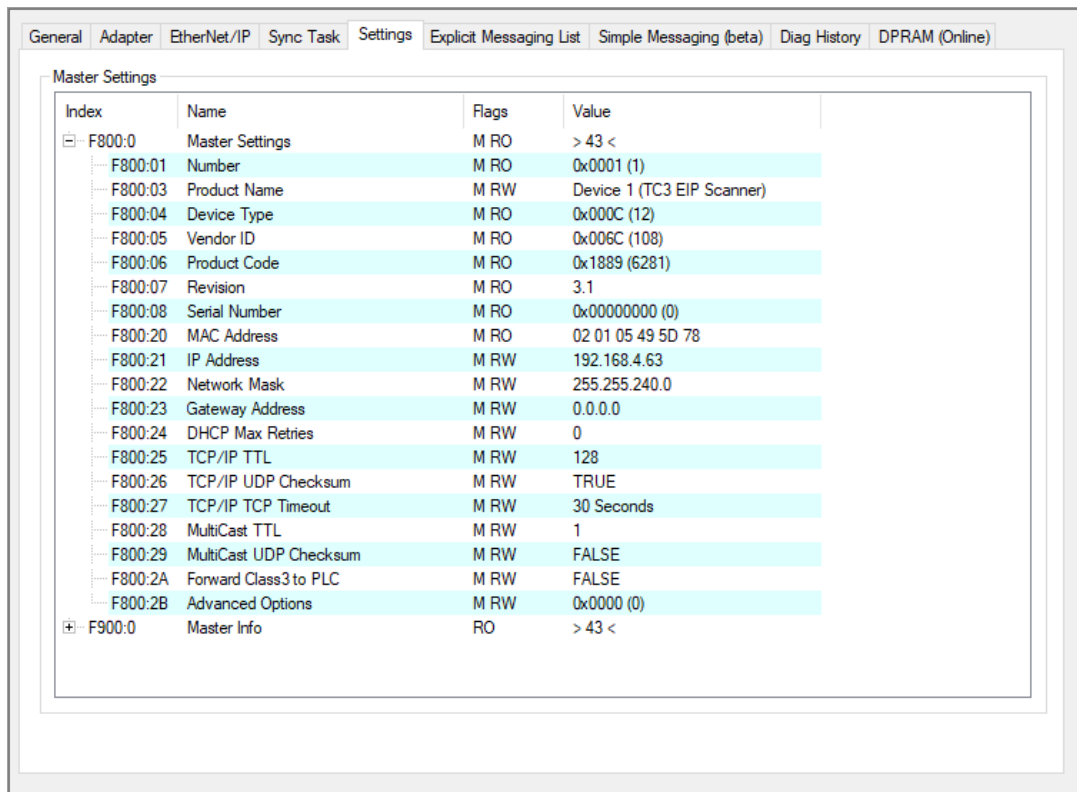
- Expand I/O tab under Solution Explorer, right click “Devices” and add “EtherNet/IP Scanner” under “EtherNet/IP”



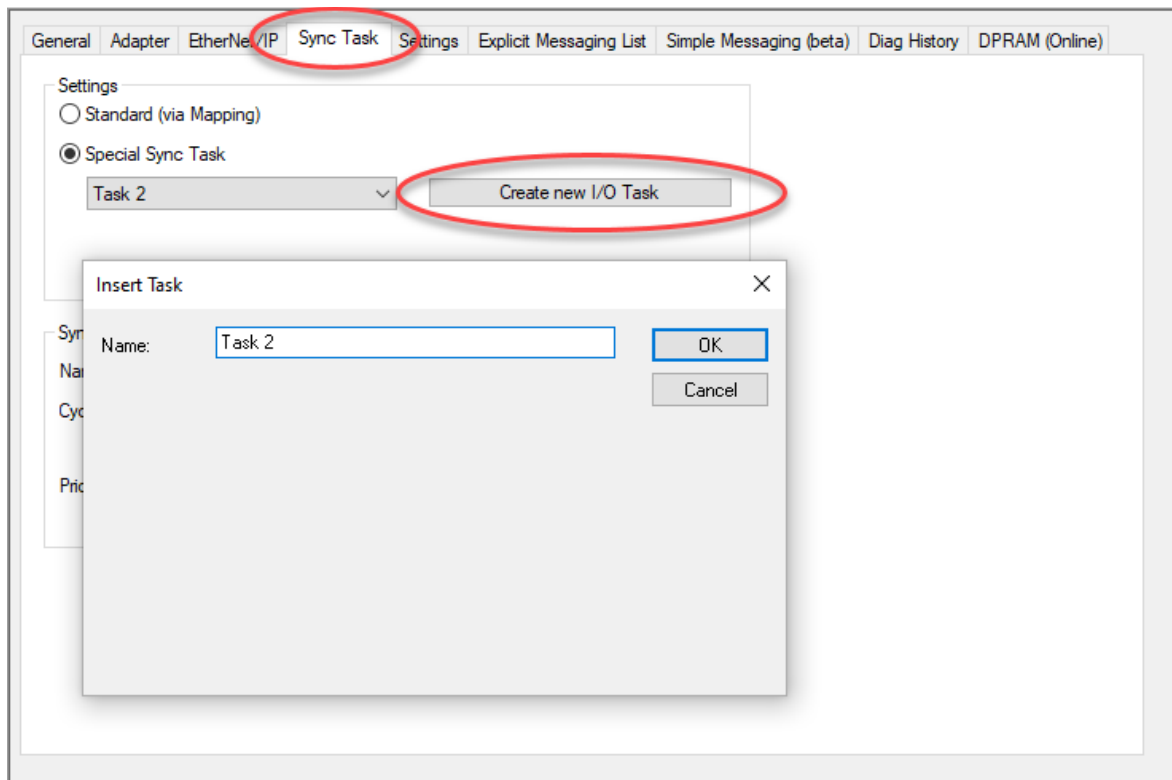
#### 4. Choose the Device for the EtherNet/IP Scanner



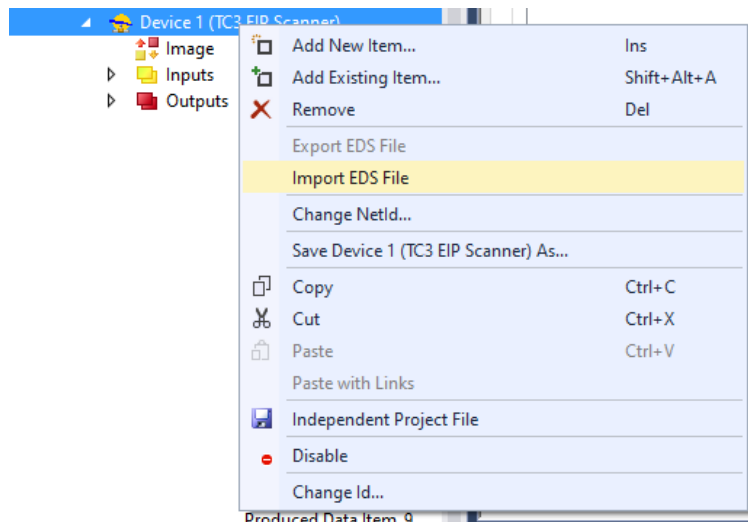
#### 5. Set the IP address and subnet mask for the scanner



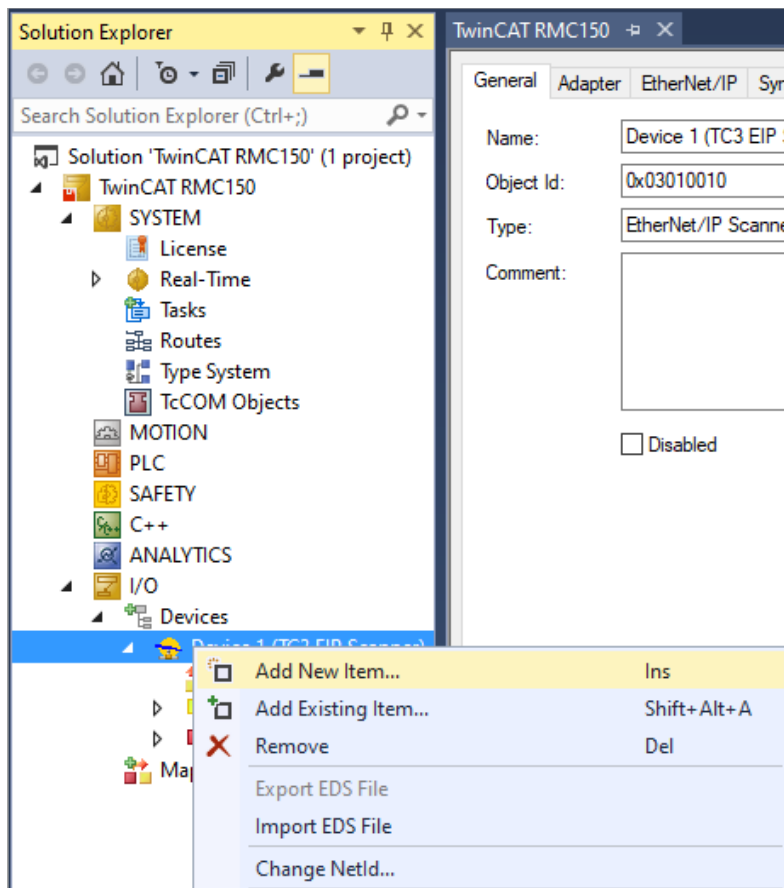
6. If the EtherNet/IP scanner will not be run on another task create a task for the scanner to run on.



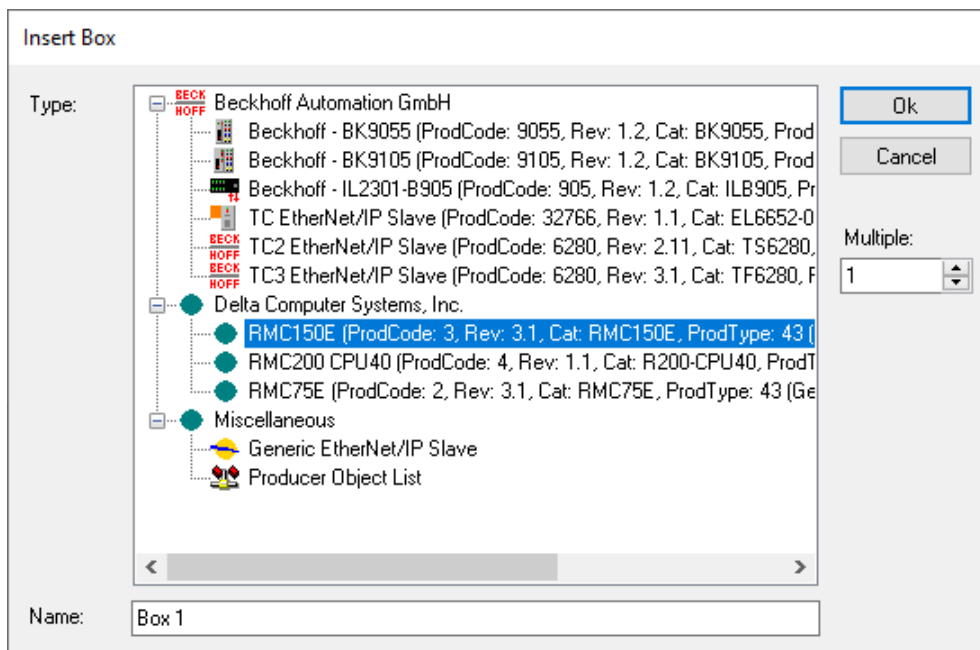
7. If the RMC EDS file does not import automatically right click on the device and select import EDS file, then choose the RMC EDS file.



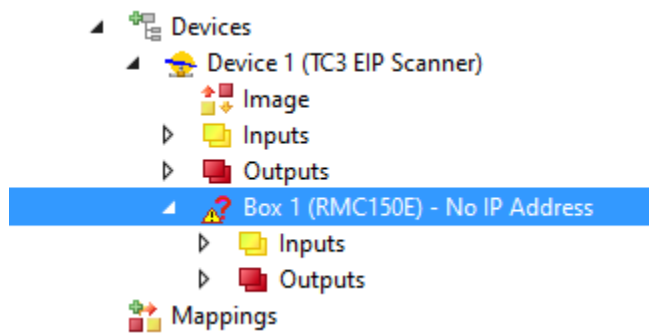
8. Right click on ethernet IP -> add new item



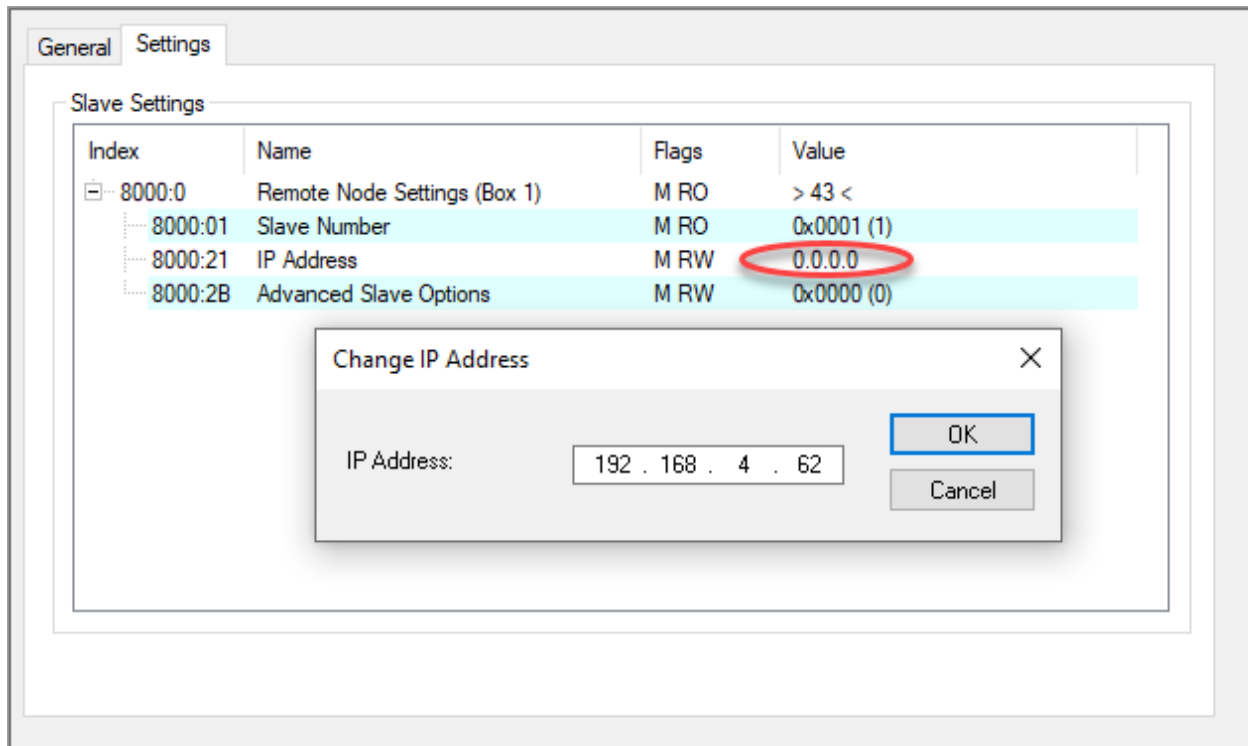
9. Select the controller to communicate with



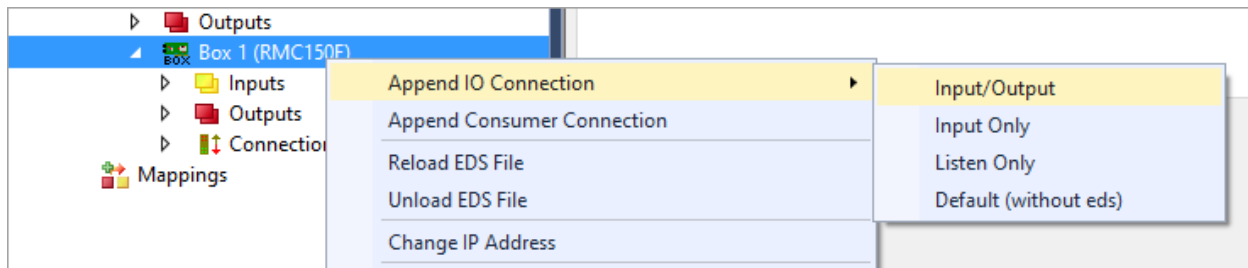
10. Click on the RMC



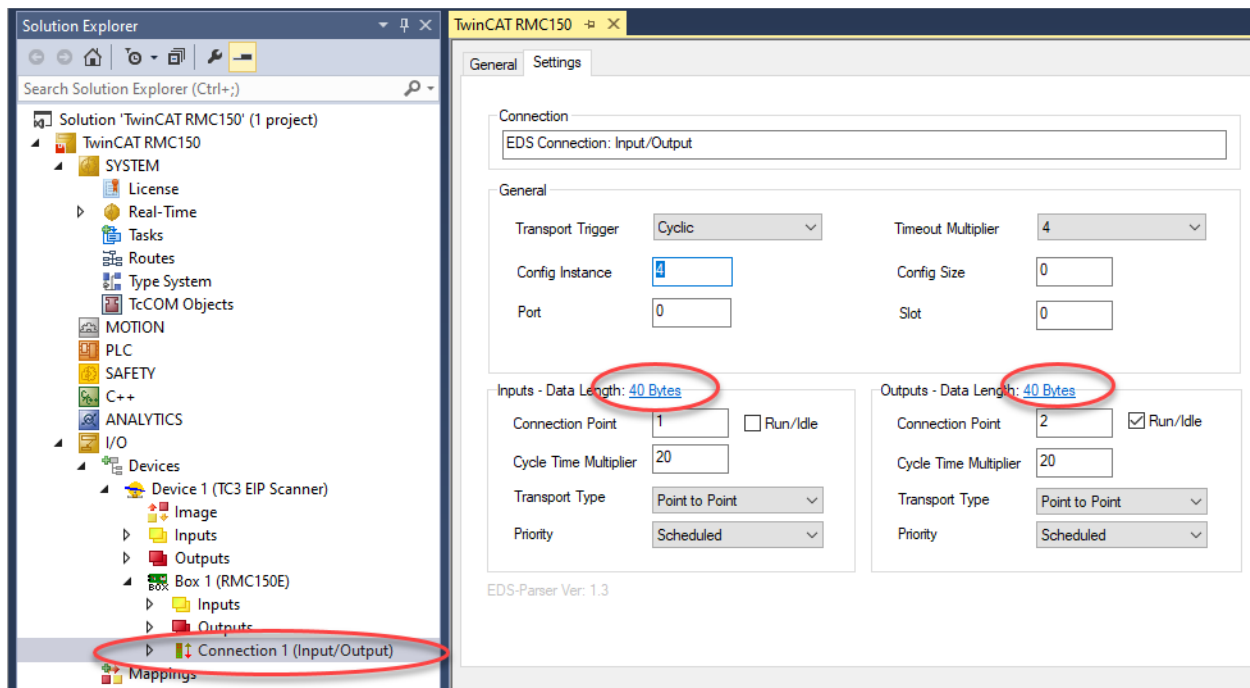
11. Set the IP address



12. Append the IO connection to Input/Output



### 13. Set the input and output lengths



### 14. Connection established!